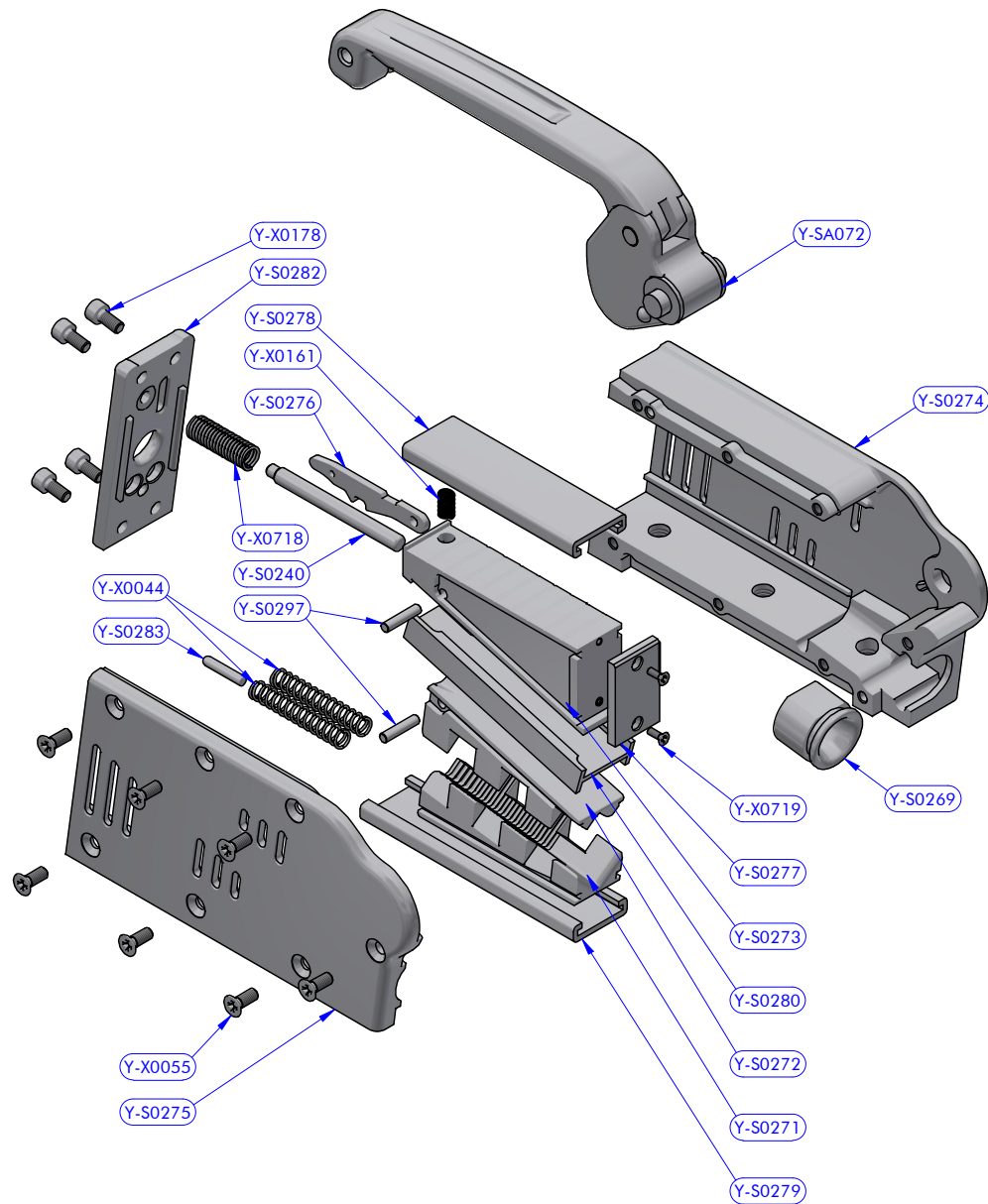
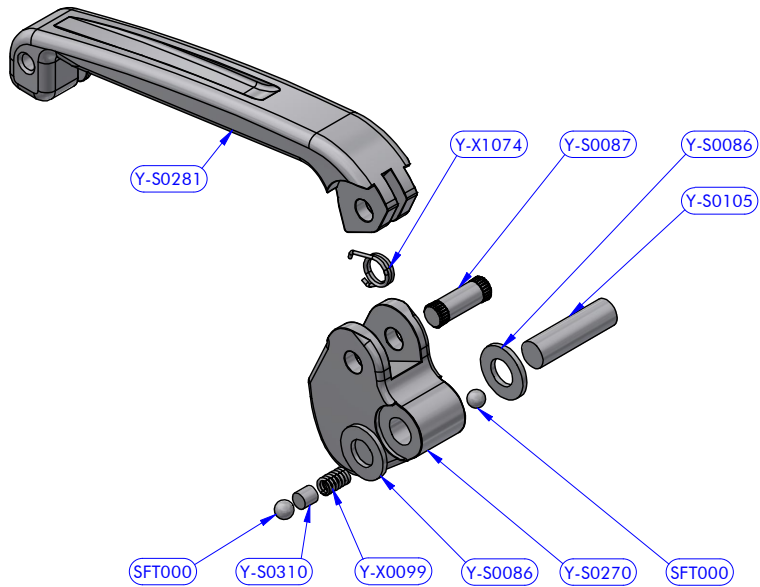


PART LIST			
CODE	DESCRIPTION	MATERIAL	Q.TY
Y-SA030	Base mounting kit	Various	1
Y-SA032	Common part assy		1



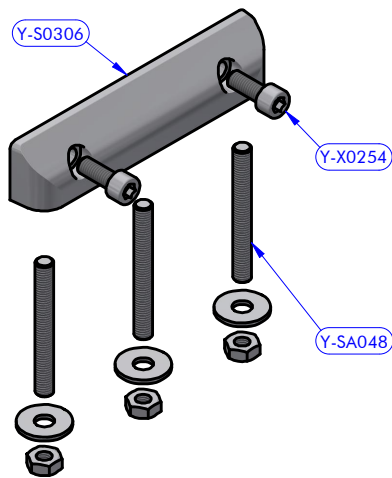
Cod. **Y-SA032**
 Gruppo parti comuni QR12

PART LIST - Y-SA032			
CODE	DESCRIPTION	MATERIAL	Q.TY
Y-S0240	Pin	S.Steel	1
Y-S0269	Ring	Aluminium	1
Y-S0271	Lower jaw	Aluminium	1
Y-S0272	Upper jaw	Aluminium	1
Y-S0273	Wedge	Aluminium	1
Y-S0274	Body	Aluminium	1
Y-S0275	Cheekplate	Aluminium	1
Y-S0276	Command lever	S.Steel	1
Y-S0277	Pad	Composite fibre	1
Y-S0278	Guide	Polietilene	1
Y-S0279	Guide	Polietilene	1
Y-S0280		Polietilene	1
Y-S0282	Rear cover	Aluminium	1
Y-S0283	Free line mark	Aluminium	1
Y-S0297	Cylinder pin	S.Steel	2
Y-SA072	Lever assy		1
Y-X0044	Compression spring	S.Steel	2
Y-X0055	Screw	S.Steel	7
Y-X0178	Screw	S.Steel	4
Y-X0718	Compression spring	S.Steel	1
Y-X0719	Screw	S.Steel	2
Y-X0161	Compression spring	S.Steel	1



Cod.Y-SA072
Lever assy QR12

PART LIST - Y-SA072			
CODE	DESCRIPTION	MATERIAL	Q.TY
SFT000	Torlon ball	Torlon	2
Y-S0086	Resin washer	POM-C	2
Y-S0087	Cylinder pin	S.Steel	1
Y-S0105	Cylinder pin	S.Steel	1
Y-S0270	Cam	Aluminium	1
Y-S0281	Lever	Aluminium	1
Y-S0310	Cylinder pin	Teflon	1
Y-X0099	Compression spring	S.Steel	1
Y-X1074	Torsion spring	S.Steel	1



Cod.Y-SA030
Base horizontal mounting kit QR12

PART LIST - Y-SA030			
CODE	DESCRIPTION	MATERIAL	Q.TY
Y-S0306	Base	Aluminium	1
Y-SA048	Fixing screw kit	S.Steel	3
Y-X0254	Screw	S.Steel	2

antal

DESCRIPTION

Clutch QR12 Side mounting version

MODEL CODE

506.123

DATE

11/09/2023

DWG N.

23091118

REV.

1 / 1

PG.